

# Relief High School Boundary Scenarios

Ardrey Kell, Myers Park, and South Mecklenburg

December 6, 2022

Planning Services Department

# Student Assignment Policy S-ASGP



## **Board Requirement for Student Assignment**

- contiguous boundaries

## **Board's Decision Matrix for School Boundary Decisions**

- home to school distance
- intact feeder patterns
- socioeconomic diversity
- utilization

## **Board's Additional Factors for Consideration**

- the feasibility of achieving the board's goals through other means, such as establishing partial magnet schools;
- keeping entire neighborhoods assigned to the same school;
- projections for population growth and demographic shifts;
- site limitations or legal restrictions that affect expansion capabilities;
- whether the school has been identified for capital improvements through bond or other funding.

# Process for Engagement and Decision

## New Relief High School Boundary

### **Superintendent, through his designees, gathers community input and feedback:**

At least 3 engagement sessions:

- session 1 introduces the opportunity, seeks input from community on new boundary
- session 2 shares at least two draft boundary scenarios and seeks community feedback
- session 3 previews the superintendent's recommendation to the Board

### **Community input and feedback shared with the superintendent and Board:**

- at least one public update to the Board during a regularly scheduled Board meeting
- at least one public hearing during a regularly scheduled Board meeting

### **Multiple inputs to the Superintendent's recommendation and Board's vote**

- Policy S-ASGP
- community input
- achieving 2017 bond intent (i.e., high school relief)

**Superintendent makes recommendation to the Board**

**Public hearing and Board decision**

**Change becomes effective**

## Planning & Engagement

- Meeting with Internal Team consisting of Learning Community Superintendents, Principals, and District Administration- ongoing
- Scheduling and facilitating parent work groups and conversations- ongoing
- Upcoming community sessions
- Upcoming interactive maps and surveys for feedback

## Scenario Modeling Approach

### March 1, 2022

- Community Session 1
- 6 CMS staff | 3 BOE members | 161 general public

### March 25, 2022

- Crowd source mapping tool  
2,976 views | 103 responses

### April 1, 2022

- Initial parent interest meeting

### April 7, 2022

- Community Session 2  
10+ CMS staff | 180+ general public

## Engagement

- Feedback from Board
- Feedback from Community via email and documented
- Feedback at Parent workgroup sessions (**April 19 & May 24**)
  - 4 subgroups
- **April 26, 2022:** Board Update

# AK/MP/SM Relief High School



## Continued Engagement & Next Steps Fall 2022

<b>Community Outreach and Facilitation of Community Conversations</b>	<ul style="list-style-type: none"><li>• Ongoing: Discussions with Internal Planning Team (Learning Community Superintendents, Principals, District Staff)</li><li>• Aug- Dec 2022: Parent Workgroup researches urban planning, best practices, and supports small group sessions</li><li>• Oct- Dec 2022: Small Group Sessions with Parents, Students, and Staff</li><li>• Oct- Dec 2022: Development of Q&amp;A to address questions and concerns</li><li>• Nov 2022 – Jan 2023: Surveys for work group, parents, schools, staff</li><li>• Nov 2022 – Jan 2023: On-the-ground neighborhood evaluation</li><li>• Early January 2023- In-person Public Engagement Session</li></ul>
<b>Finalize Recommendation</b>	Late January 2023
<b>Public Hearing Board Vote</b>	February 2023

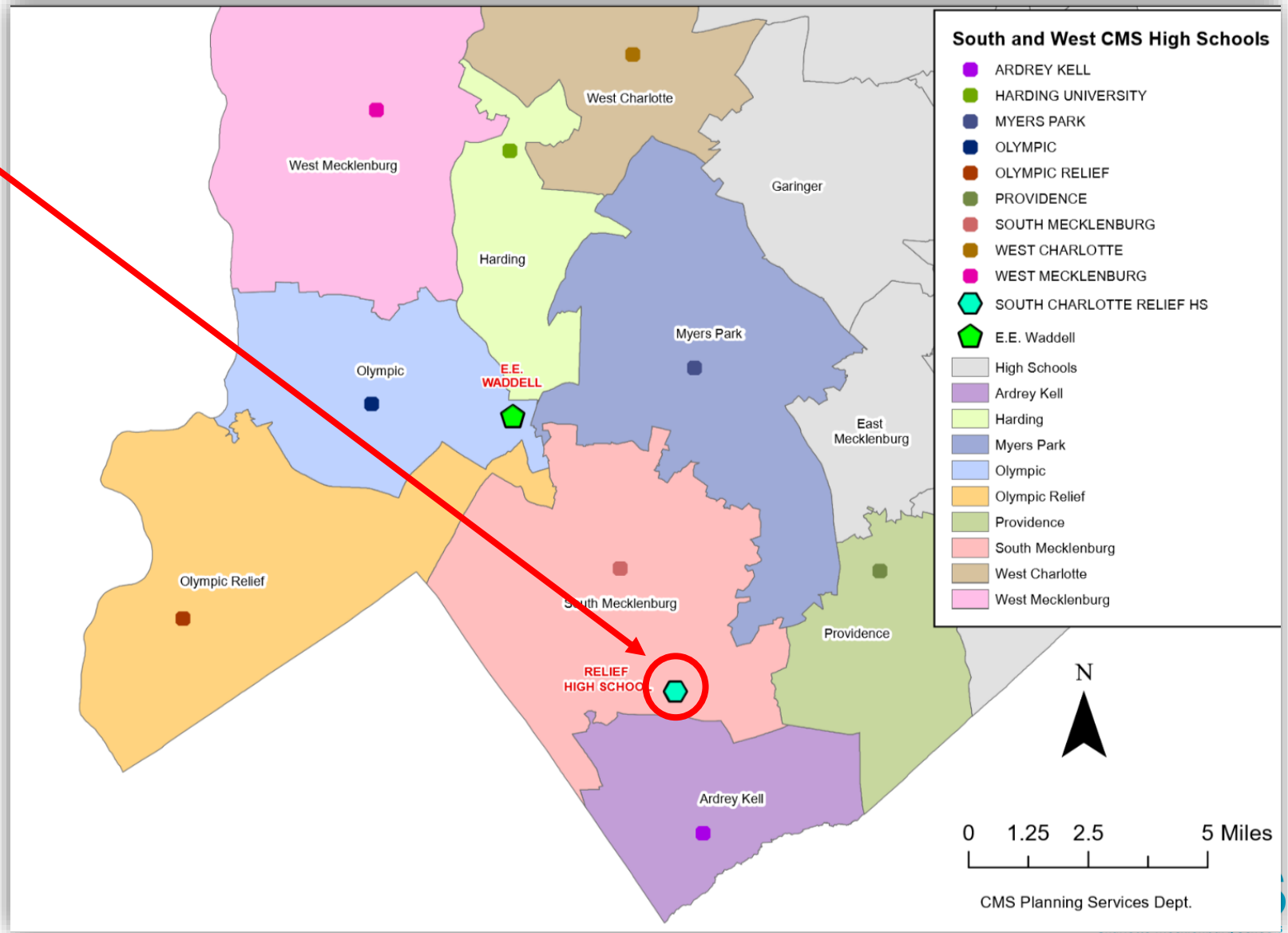
# AK/MP/SM Relief High School

## Scenario Development and Analysis

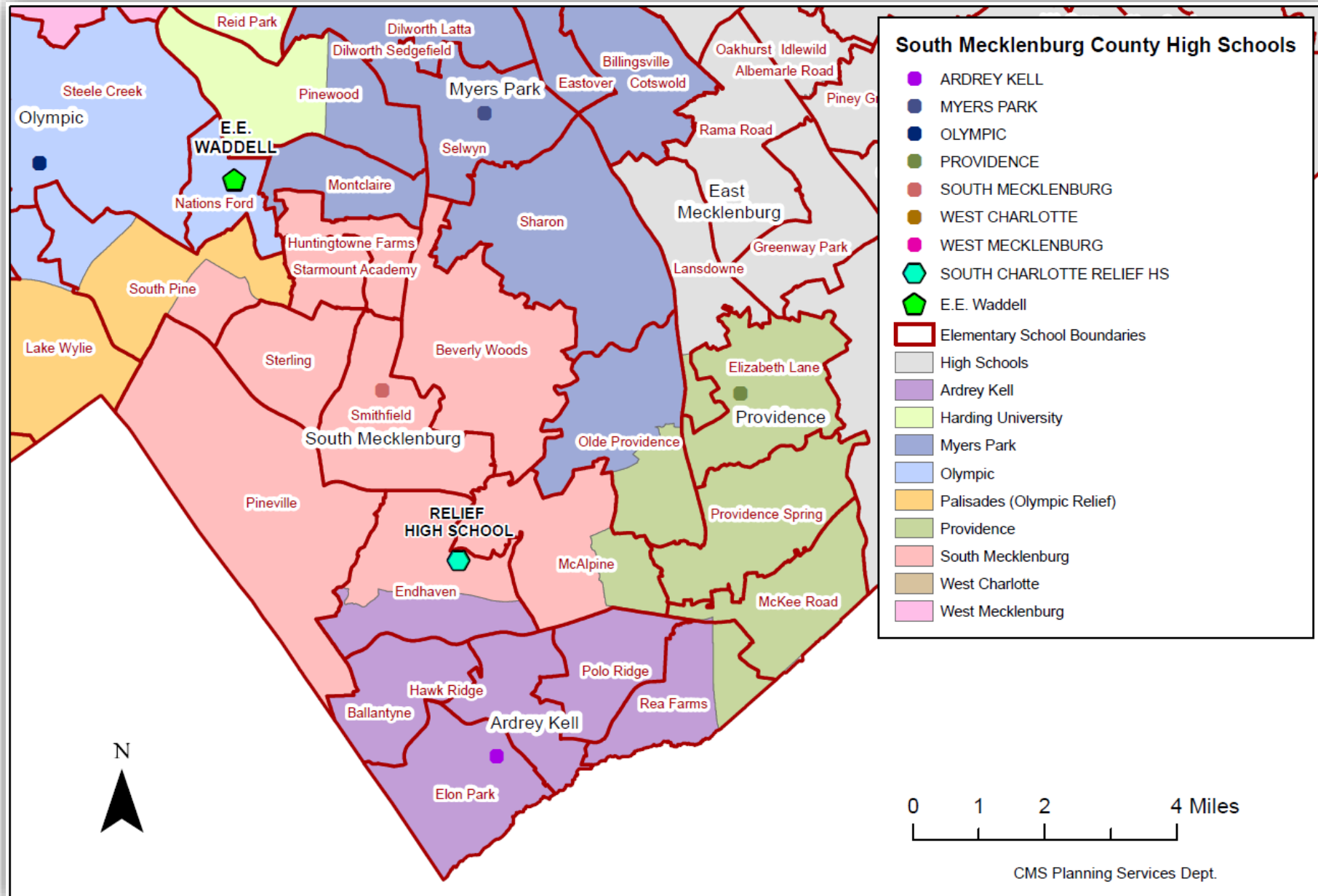
<b>Scenario Development</b>	<ul style="list-style-type: none"><li>• Spring 2022- Scenarios developed for community feedback (<i>Purple, Pink</i>)</li><li>• August 2022- Creation of two additional scenarios built upon the previous scenarios (<i>Blue, Green</i>)</li><li>• Sept 2022- After review and feedback from parent workgroup, Planning created 3 additional scenarios for review by internal team and parent workgroup (<i>Orange, Yellow, Violet</i>)</li><li>• Sept 2022- Green scenario was combined with the blue scenario</li><li>• Oct 2022- 4 scenario options presented to Internal Planning Team (<i>Blue, Orange, Yellow, Violet</i>)</li><li>• Oct 2022- 4 scenario options presented to Parent Workgroup (<i>Blue, Orange, Yellow, Violet</i>)</li><li>• Oct-Nov 2022 – 5 new scenario drafts based on feedback so far (Red A, Red B, Brown A, Brown B, Brown C)</li><li>• <b>Oct 2022-Jan 2023- Continue with scenario iterations and modification in accordance with board priorities, board policy, and community feedback</b></li></ul>
<b>Analysis</b>	<ul style="list-style-type: none"><li>• Sept 2022- New student enrollment data processed for 2022-2023 school year at 20<sup>th</sup> day</li><li>• Sept 2022- Began scenario development and analysis grounded in Board priorities</li><li>• Sept-Oct- Calculated estimates for number of students impacted, utilization, feeder patterns, socioeconomics, and proximity for option scenarios</li><li>• Oct 2022- Measured, analyzed, and presented outcomes for each scenario option</li><li>• Oct-Dec 2022- Analyze community feedback</li></ul>
<b>Additional Considerations</b>	<ul style="list-style-type: none"><li>• Urban planning &amp; development (permits, proposals, land use changes, transportation)</li><li>• Program or pathway offerings at current high schools (magnet programs, CTE, etc)</li><li>• Learning from others who have recently opened high schools</li></ul>

# South Charlotte Relief High School

- New 100 classroom high school located at 12218 North Community House Road.
- Relieves overcrowding at Ardrey Kell, South Mecklenburg and Myers Park high schools

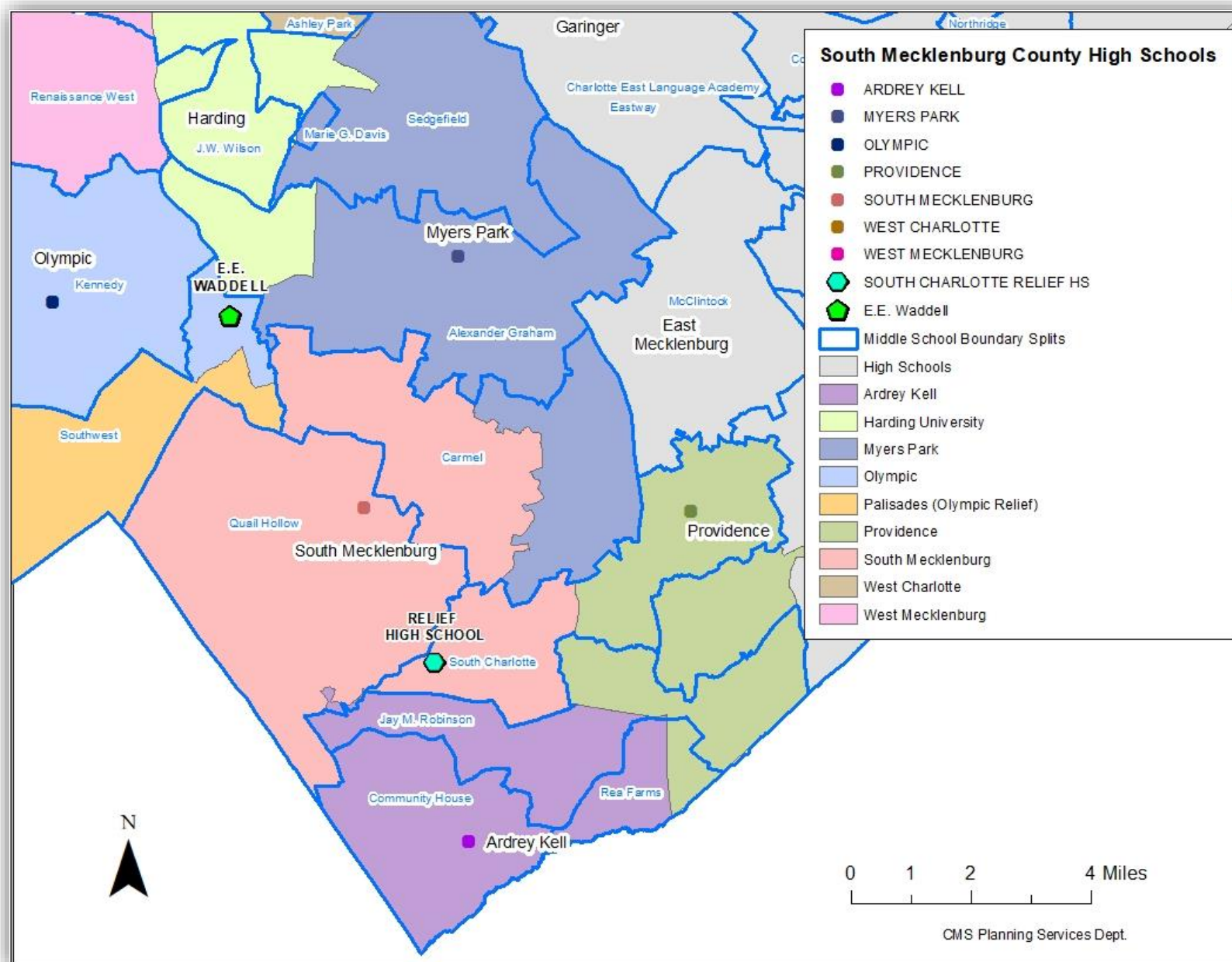


# High School by Elementary Attendance Area





# High School by Middle School Attendance Area



# Current School Data for AK/MP/PR/SM:



## Enrollment

School	Number of Classrooms	Number of Mobile Units	2021-22 Enrollment	2022-23 Enrollment	Estimated Student Capacity*	Current utilization rate
Ardrey Kell	96	22	3,494	3,543	2,500	<b>142%</b>
Myers Park	140	19	3,539	3,615	3,000	<b>121%</b>
Providence	88	7	2,025	2,057	2,000	<b>103%</b>
South Mecklenburg	125	9	3,259	3,366	2,700	<b>125%</b>

\*This estimate is based on various factors such as the number of available/anticipated classrooms, staff allotments, resources, school management, and district standards. This is adjusted from the original estimates shared to more closely reflect the environments at the schools.

The Board's goal is to move towards 100-classroom, 2500 student high schools.

# Current School Data for AK/MP/SM: Current Feeder Patterns

## Summary of Feeder Patterns for High Schools in Impact Area

Total Feeder Patterns	Count	Description	Improvement Indicator
ES to MS to HS	37	Total Number of Feeder Patterns	Decrease
MS to HS	15	Total Number of MS to HS Feeder Patterns	Decrease
Intact Feeder Patterns			
ES to MS to HS intact	19	Count of Intact Feeder Patterns	Increase
MS to HS intact	3	Count of Intact Feeder Patterns from MS to HS	Increase

# Current Feeder Patterns

	2023-2024 ES	2023-2024 MS	2023-2024 HS	Est Student Count	ES to MS to HS Intact
1	Ballantyne	Community House	Ardrey Kell	509	1
2	Beverly Woods	Carmel	South Mecklenburg	402	1
3	Billingsville Cotswold	Alexander Graham	Myers Park	651	1
4	Dilworth (Sedgefield-Latta)	Sedgefield	Myers Park	523	1
5	Eastover	Sedgefield	Myers Park	274	1
6	Elizabeth Lane	South Charlotte	Providence	621	1
7	Elon Park	Community House	Ardrey Kell	608	1
8	Endhaven	Jay M Robinson	Ardrey Kell	238	
9		Quail Hollow	South Mecklenburg	150	
10		South Charlotte	South Mecklenburg	78	
11	First Ward Creative Arts	Sedgefield	Myers Park	156	1
12	Hawk Ridge	Community House	Ardrey Kell	242	
13		Jay M Robinson	Ardrey Kell	226	
14	Huntingtowne Farms	Carmel	South Mecklenburg	359	1
15	Marie G Davis	Marie G Davis	Myers Park	100	1
16	McAlpine	Jay M Robinson	Providence	167	
17		South Charlotte	South Mecklenburg	236	
18	McKee Rd	Jay M Robinson	Providence	527	1
19	Montclair	Alexander Graham	Myers Park	364	1
20	New ES South	Community House	Ardrey Kell	810	1
21	Olde Providence	Carmel	Myers Park	368	
22		South Charlotte	Providence	160	
23	Pineville	Quail Hollow	South Mecklenburg	658	1
24	Pinewood	Alexander Graham	Harding	228	
25			Myers Park	221	
26	Polo Ridge	Jay M Robinson	Ardrey Kell	636	1
27	Rea Farms K8	Rea Farms K8	Ardrey Kell	307	
28			Providence	38	
29	Selwyn	Alexander Graham	Myers Park	468	1
30	Sharon	Alexander Graham	Myers Park	320	
31		Carmel	Myers Park	243	
32	Smithfield	Quail Hollow	South Mecklenburg	487	1
33	South Pine	Kennedy	Olympic	108	
34		Quail Hollow	South Mecklenburg	72	
35		Southwest	Palisades	359	
36	Starmount Academy	Carmel	South Mecklenburg	332	1
37	Sterling	Quail Hollow	South Mecklenburg	478	1

# Current School Data for AK/MP/PR/SM: SES and Proximity



<b>Socioeconomic Status (SES)*</b>			
<b>Schools</b>	<b>High SES</b>	<b>Mid SES</b>	<b>Low SES</b>
Ardrey Kell	<b>78%</b>	<b>21%</b>	<b>1%</b>
Myers Park	<b>56%</b>	<b>25%</b>	<b>19%</b>
South Mecklenburg (incl. language magnet students)	<b>28%</b>	<b>25%</b>	<b>46%</b>

\* SES is an index measure based on family income, adult educational attainment, homeownership, household composition, and English language ability (Source: US Census Bureau American Community Survey, 5YR Estimates, Vintage 2020).

<b>Proximity Analysis</b>	<b><u>Travel Time (in minutes by car)</u></b>			<b><u>Travel Distance (in miles)</u></b>		
	<b>Min</b>	<b>Max</b>	<b>Mean</b>	<b>Min</b>	<b>Max</b>	<b>Mean</b>
Ardrey Kell	<b>1.3</b>	<b>12.6</b>	<b>6.1</b>	<b>0.3</b>	<b>5.3</b>	<b>2.5</b>
Myers Park	<b>2.9</b>	<b>16.4</b>	<b>9.9</b>	<b>0.6</b>	<b>8.4</b>	<b>3.7</b>
South Mecklenburg	<b>1.9</b>	<b>15.7</b>	<b>8.1</b>	<b>0.5</b>	<b>8.3</b>	<b>3.4</b>

**Current scenarios we are requesting feedback on  
(please note they are still drafts. Based on the  
feedback we receive, one may end up moving  
forward as the recommendation or a new  
scenario may be created with features from these  
drafts)**

# RED A Scenario

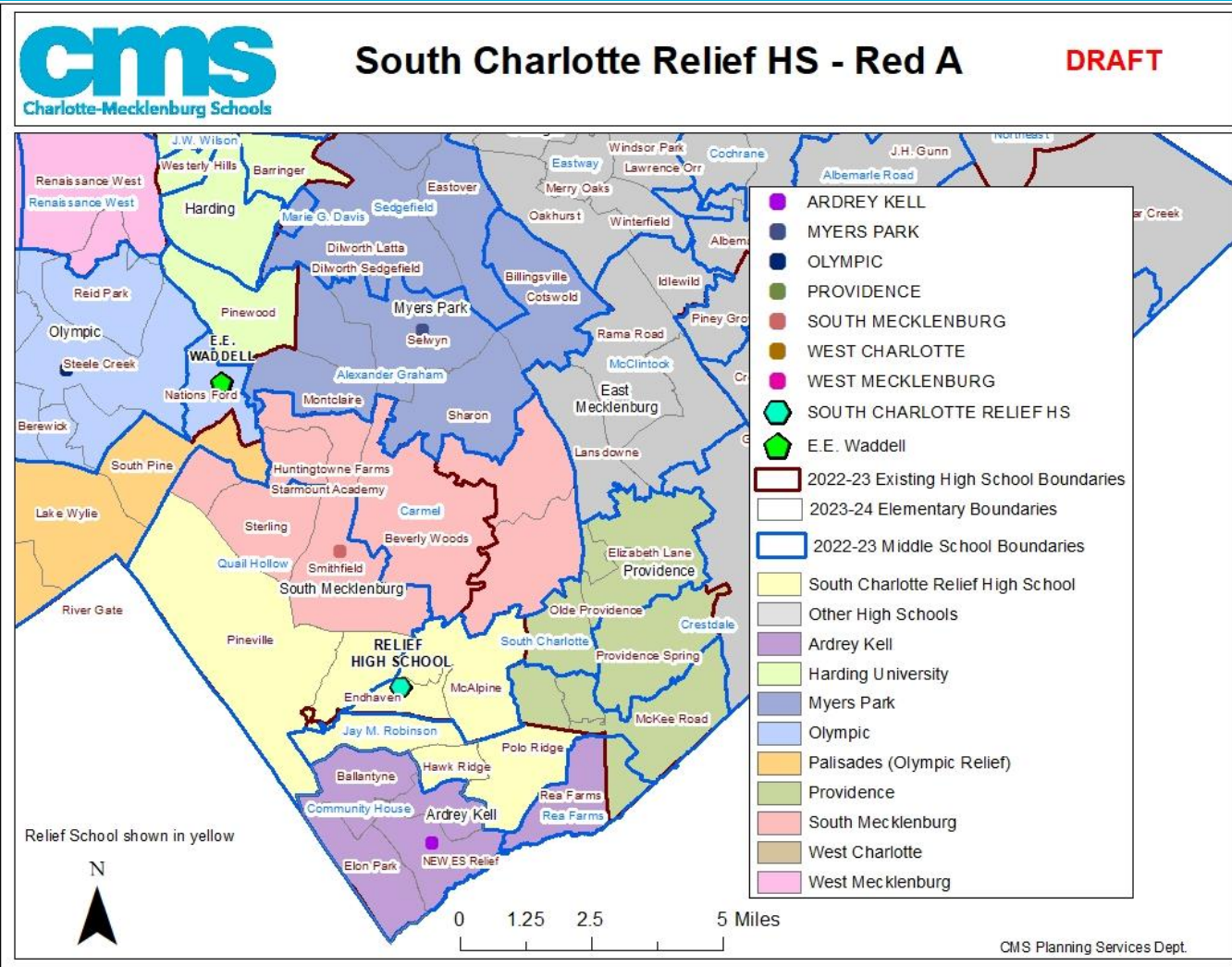
## Impact, Enrollment, SES



**Number of Students Impacted (Y1)** 2133

School	2022-23 20th Day Enrollment	2021-22 Capacity Utilization	RED A Estimated Enrollment (Y2)	RED A Planning Capacity (Y2)
Ardrey Kell	3557	142%	2509	100%
Myers Park	3615	121%	3027	101%
South Mecklenburg	3366	125%	2917	108%
Relief HS	N/A	N/A	2052	82%

School	HIGH SES	MID SES	LOW SES	HIGH SES	MID SES	LOW SES
Ardrey Kell	78%	21%	1%	73%	25%	2%
Myers Park	56%	25%	19%	50%	28%	22%
South Mecklenburg	28%	25%	46%	48%	10%	43%
Relief HS	N/A	N/A	N/A	56%	29%	15%



# RED A Scenario

## Feeders

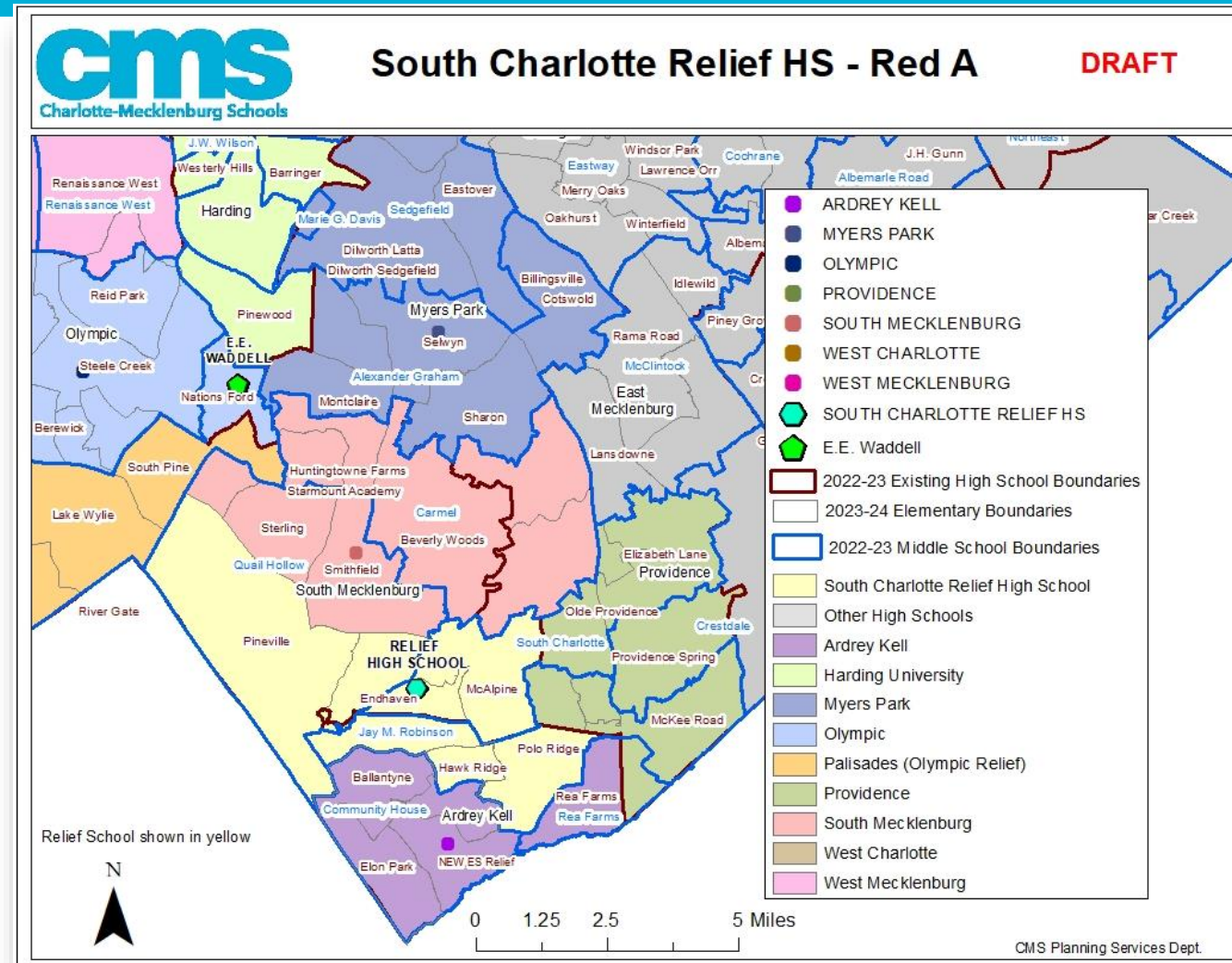
Number of Students Impacted (Y1)

2133

### Feeder changes:

- All of Carmel MS goes to South Meck HS
  - i.e., the southern section of Sharon ES and the northern section of Olde Providence ES are reassigned from Myers Park to South Meck.
- All of Pineville ES, Endhaven ES, and Polo Ridge ES, the section of McAlpine ES that currently goes to South Meck, and the northern part of Hawk Ridge (that goes to JM Robinson MS) to the relief HS
  - i.e., the southern section of Endhaven, the northern section of Hawk Ridge, and Polo Ridge (they currently all go to JM Robinson MS) are reassigned from Ardrey Kell to the relief HS.
  - Pineville, McAlpine, and the northern section of Endhaven are reassigned from South Meck to the relief HS.

Providence HS boundary stays the same.





# BROWN A Scenario

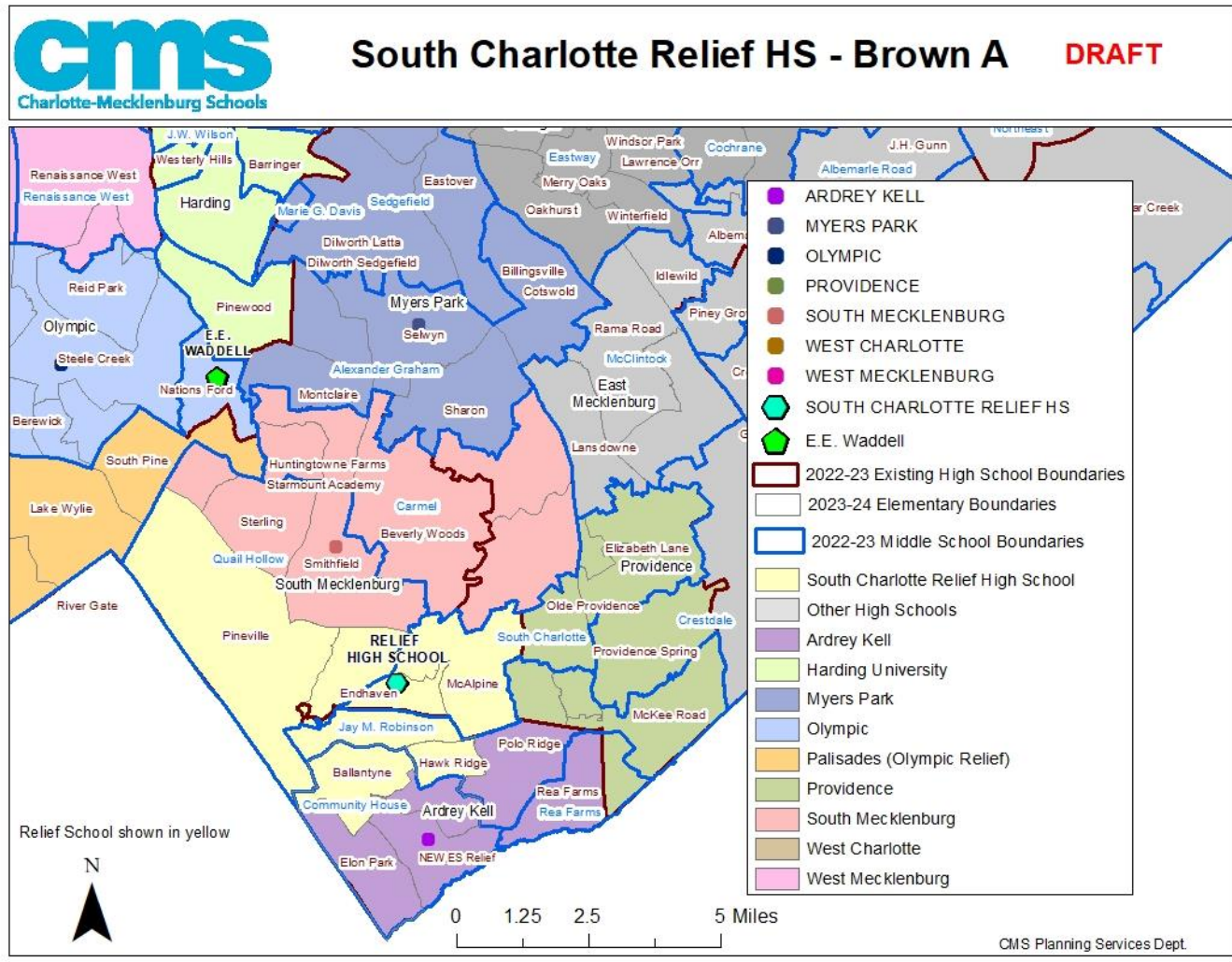
## Impact, Enrollment, SES



**Number of Students Impacted (Y1)** 2063

School	2022-23 20th Day Enrollment	2021-22 Capacity Utilization	BROWN A Estimated Enrollment (Y2)	BROWN A Planning Capacity (Y2)
Ardrey Kell	3557	142%	2592	<b>104%</b>
Myers Park	3615	121%	3027	<b>101%</b>
South Mecklenburg	3366	125%	2917	<b>108%</b>
<b>Relief HS</b>	<b>N/A</b>	<b>N/A</b>	1969	<b>79%</b>

School	HIGH SES	MID SES	LOW SES	HIGH SES	MID SES	LOW SES
Ardrey Kell	78%	21%	1%	83%	17%	0%
Myers Park	56%	25%	19%	50%	28%	22%
South Mecklenburg	30%	23%	47%	48%	10%	43%
<b>Relief HS</b>	<b>N/A</b>	<b>N/A</b>	<b>N/A</b>	<b>42%</b>	<b>40%</b>	<b>18%</b>



# BROWN A Scenario

## Feeders

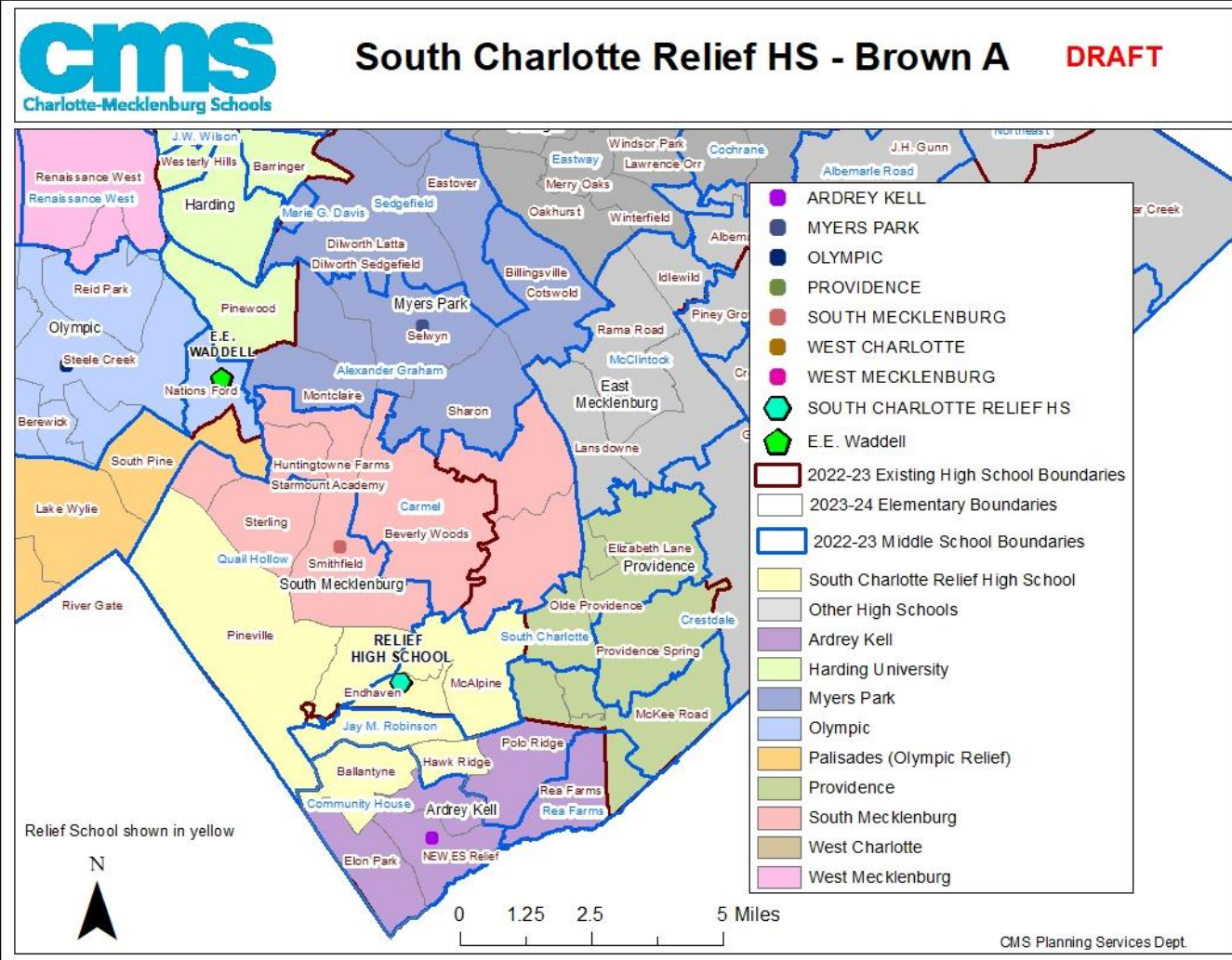


Number of Students Impacted (Y1)	2063
----------------------------------	------

Feeder changes:

- All of Carmel MS goes to South Meck HS
  - i.e. the southern section of Sharon ES and the northern section of Olde Providence ES are reassigned from Myers Park to South Meck.
- New Ballantyne (2023-24), the northern section of Hawk Ridge, Pineville, Endhaven, and the section of McAlpine that currently goes to South Meck go to the relief HS.
  - i.e. new Ballantyne, the southern section of Endhaven and the northern section of Hawk Ridge are reassigned from Ardrey Kell to the relief HS
  - Pineville, the northern section of Endhaven, and McAlpine are reassigned from South Meck to the relief HS.

Providence HS boundary stays the same.



# BROWN C Scenario

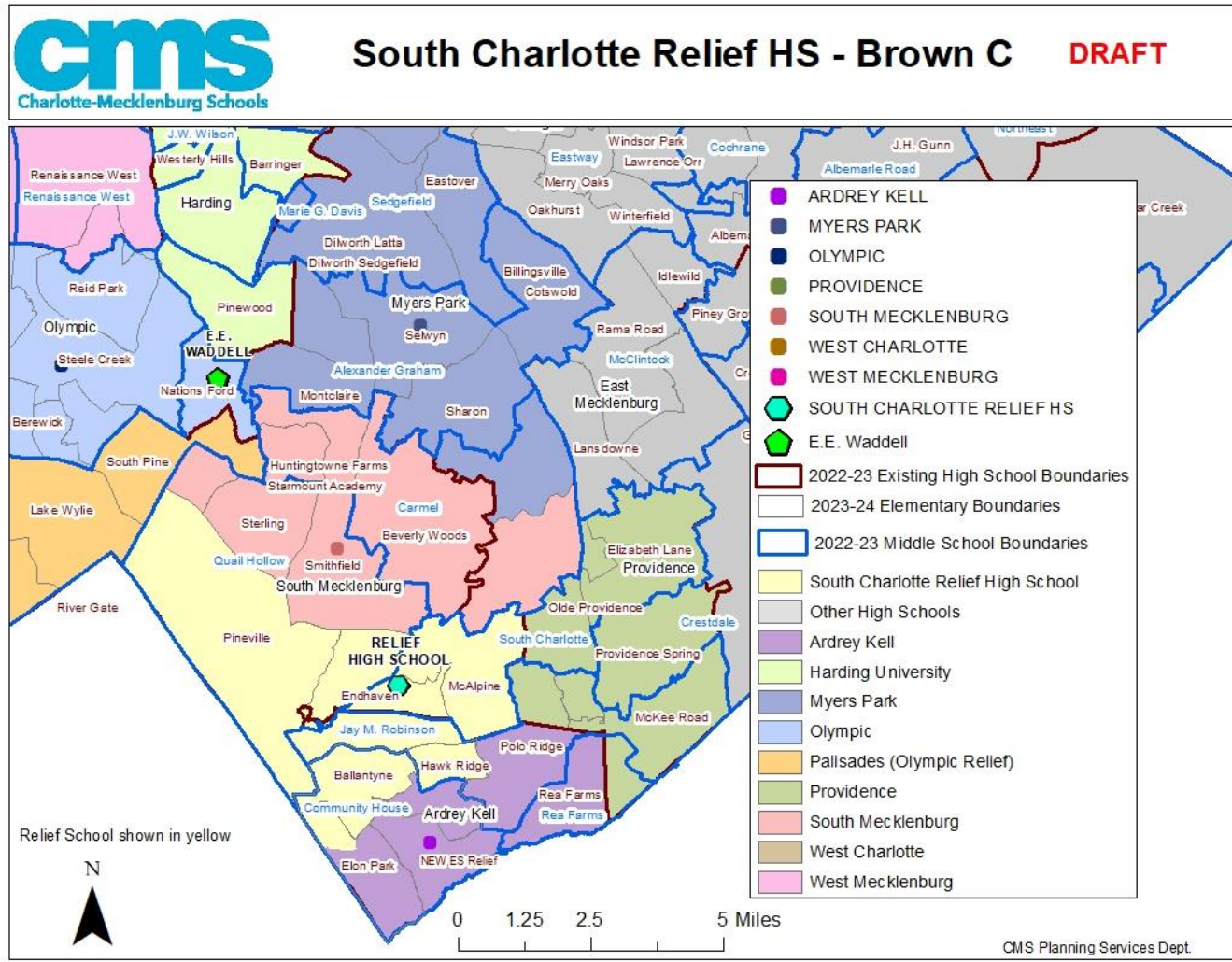
## Impact, Enrollment, SES



Number of Students Impacted (Y1) 2090

School	2022-23 20th Day Enrollment	2021-22 Capacity Utilization	BROWN C Estimated Enrollment (Y2)	BROWN C Planning Capacity (Y2)
Ardrey Kell	3557	142%	2327	<b>93%</b>
Myers Park	3615	121%	3244	<b>108%</b>
South Mecklenburg	3366	125%	2700	<b>100%</b>
Relief HS	N/A	N/A	2234	<b>89%</b>

School	HIGH SES	MID SES	LOW SES	HIGH SES	MID SES	LOW SES
Ardrey Kell	78%	21%	1%	81%	19%	0%
Myers Park	56%	25%	19%	53%	26%	21%
South Mecklenburg	30%	23%	47%	42%	11%	47%
Relief HS	N/A	N/A	N/A	<b>49%</b>	<b>35%</b>	<b>16%</b>



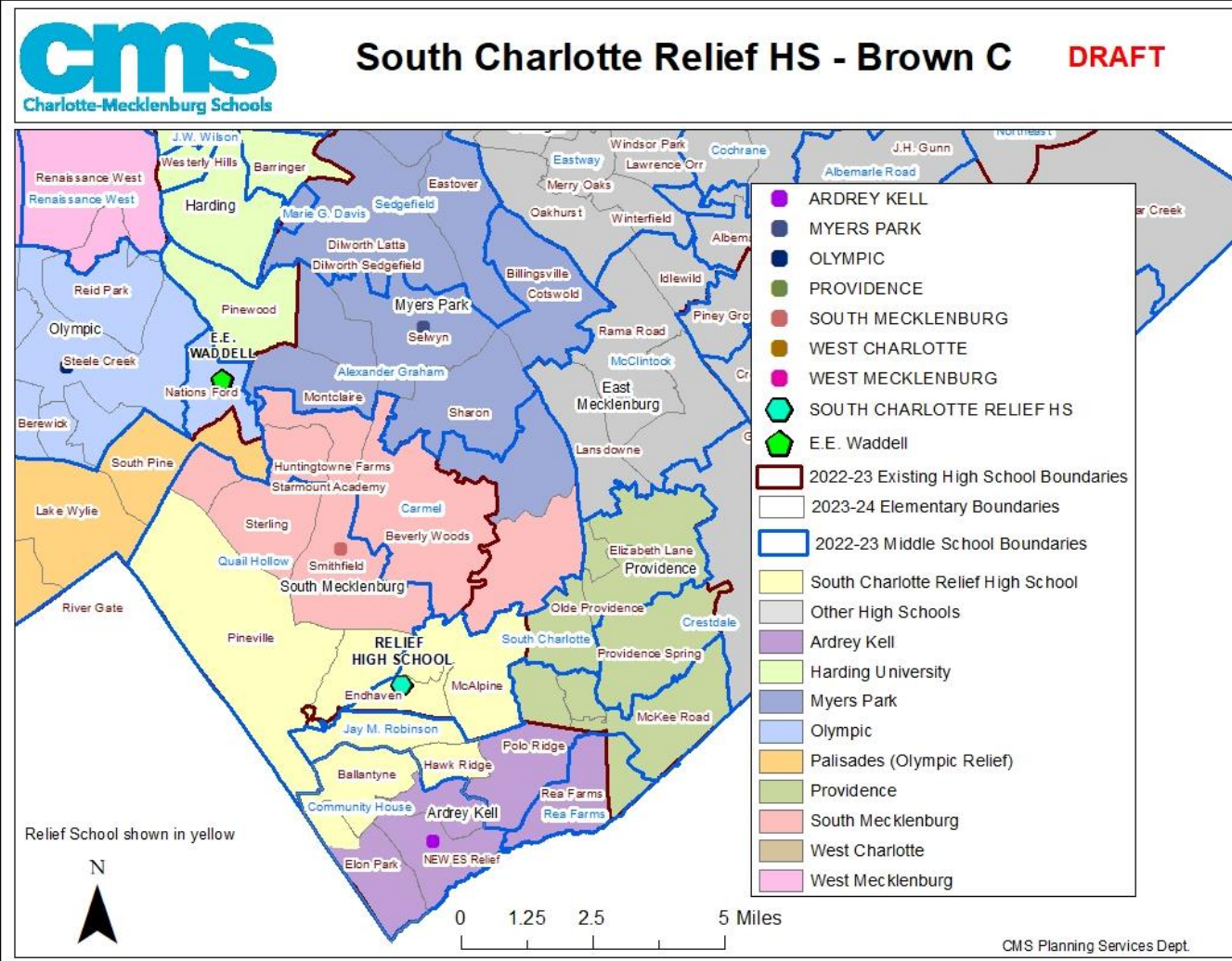
# BROWN C Scenario

## Feeders

Number of Students Impacted (Y1)	2090
----------------------------------	------

The only difference between Brown B and Brown C is that Brown C uses the current Ballantyne ES boundary and reassigns that area from Ardrey Kell to the relief HS to provide Ardrey Kell with additional relief.

i.e., the northern section of the new Elon Park boundary would go to the relief HS (both Elon Park and Ballantyne would still go to Community House together)



# Comparing Results: Red A, Brown A & C Scenarios

# Estimated Enrollment/Capacity (Y2)



## Estimated Enrollment and Utilization (Y2)

Schools	2022-2023 M1 Enrollment	RED_A (Estimated Enrollment) with Magnet/Transfers	BROWN_A (Estimated Enrollment) with Magnet/Transfers	BROWN_C (Estimated Enrollment) with Magnet/Transfers
Ardrey Kell	3529	2509	2592	2327
Myers Park	3605	3027	3027	3244
South Meck	3362	2917	2917	2700
New Relief HS	N/A	2052	1969	2234

Schools	Planning Capacity	Current Utilization	RED_A (Estimated Utilization)	BROWN_A (Estimated Utilization)	BROWN_C (Estimated Utilization)
Ardrey Kell	2500	141%	100%	104%	93%
Myers Park	3000	120%	101%	101%	108%
South Meck	2700	125%	108%	108%	100%
New Relief HS	2500	n/a	82%	79%	89%

# Socioeconomic Status

## Estimated Socioeconomic Status by Option Scenario

School	CURRENT			RED A			BROWN A			BROWN C		
	HIGH	MID	LOW	HIGH	MID	LOW	HIGH	MID	LOW	HIGH	MID	LOW
Ardrey Kell	78%	21%	1%	73%	25%	2%	83%	17%	0%	81%	19%	0%
Myers Park	56%	25%	19%	50%	28%	22%	50%	28%	22%	53%	26%	21%
South Meck	28%	25%	46%	48%	10%	43%	48%	10%	43%	42%	11%	47%
New HS	-	-	-	56%	29%	15%	42%	40%	18%	49%	35%	16%
Area* Average	60%	23%	17%									
District Average	29%	34%	36%									

# Feeder Patterns

Feeders	Improvement Measure	Current	Red A	Brown A	Brown C
<b>Total Feeder Count</b>					
ES to MS to HS	Decrease	37	37	37	38
MS to HS	Decrease	15	15	17	18
<b>Intact Feeder Count</b>					
ES to MS to HS	Increase	19	19	19	18
MS to HS	Increase	3	3	2	1



# Home to School Distance

Average travel distance (miles)				
	Current	Red A	Brown A	Brown C
Ardrey Kell	2.5	2.2	2.3	2.2
Myers Park	3.7	3.3	3.3	3.5
South Meck	3.4	3.5	3.5	3.3
New HS	-	3.7	3.2	3.3

# Next Steps

- December: continue with parent, staff, and student engagement at schools and virtually
- December: continue to receive survey feedback from parents, staff, and students on the three draft scenarios  
Latest survey with these three scenarios: <https://forms.gle/YeZaZwhyLr41ruXs9>.
- December: adjust scenarios according to feedback
- January: community-wide/public meetings for feedback on latest drafts
- Late January: finalize the superintendent's recommendation
- February: in the first board meeting, there will be a public hearing and the board will be presented the superintendent's recommendation. The Board is scheduled to vote in the second Board meeting.

